



AE™ Specifications

The MIOX AE system is a simplified automatic unit configured for permanent installations requiring between 4 and 8 lbs/day (1.8 – 3.6 kg/day) of Mixed Oxidant Solution (MOS) measured as Free Available Chlorine (FAC). Available as a skid-mounted or stand-alone system, the AE is ideal for industrial applications and small rural and remote communities. The system activates based upon a level sensor measuring the volume of oxidant in a storage tank. After connection to water and a power source, the only routine operator service requirements are to load salt into the brine generator.

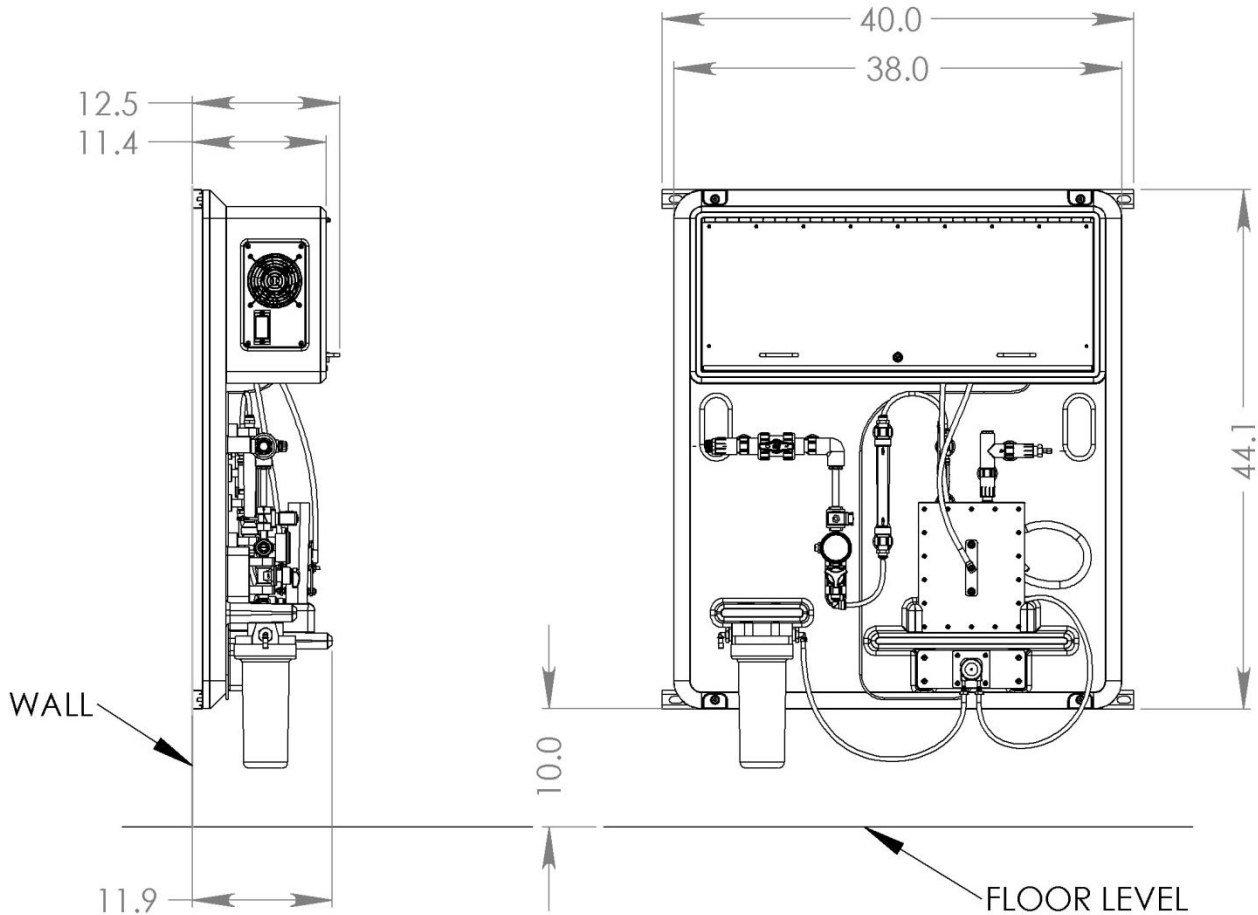
	AE-4	AE-6	AE-8
Rated FAC Capacity	4 lbs/day 1.8 kg/day	6 lbs/day 2.7 kg/day	8 lbs/day 3.6 kg/day
Water Treatment Capacity (at 1 ppm FAC)	480,000 gal/day 1,817 m ³ /day	720,000 gal/day 2,726 m ³ /day	960,000 gal/day 3,634 m ³ /day
Salt Conversion (SCE)*	3.0 lb salt/lb FAC 3.0 kg salt/kg FAC	3.0 lb salt/lb FAC 3.0 kg salt/kg FAC	3.0 lb salt/lb FAC 3.0 kg salt/kg FAC
Energy Conversion (ECE)*	3.5 kW-hr/lb FAC 7.7 kW-hr/kg FAC	3.5 kW-hr/lb FAC 7.7 kW-hr/kg FAC	3.5 kW-hr/lb FAC 7.7 kW-hr/kg FAC
FAC Concentration*	3,800 mg/L (+/- 1,000)	4,200 mg/L (+/- 1,000)	5,000 mg/L (+/- 1,000)
Flow Rate	6 gph 22.7 lph	9 gph 34 lph	9 gph 34 lph
Electrical Service Requirement (OSG Only)	110 or 220 VAC, 1 ph, 20A, 50/60 hertz	110 or 220 VAC, 1 ph, 20A, 50/60 hertz	220 VAC, 1 ph, 20A, 50/60 hertz
Nominal Energy to Unit	110 VAC: 12A, 1.3 KVA 220 VAC: 6A, 1.3 KVA	110 VAC: 15A, 1.7 KVA 220 VAC: 7.5A, 1.7 KVA	220 VAC: 9A, 2.0 KVA
Air Temp. Required	42° to 110° F 6° to 43° C		
Recommended Feed Water Temperature*	50° to 80° F 10° to 26.7° C		
Allowable Feed Water Temperature*	40° to 95° F 5° to 35° C		
Feed Water Pressure	25 to 75 psi 172 to 517 kPa		
Approximate Dimensions (WxDxH)	40 x 12.5 x 44.1 inches 101.6 x 31.75 x 112.01 cm		

*Performance may vary depending on salt quality, water quality, and water temperature.

Note: This electronic document is controlled. Once this document is printed it becomes uncontrolled and obsolete. Refer only to electronic document for the latest information.



AE Drawing



REFERENCE GENERAL ARRANGEMENT DRAWING 112-00021
FOR INSTALLATION REQUIREMENTS

Note: This electronic document is controlled. Once this document is printed it becomes uncontrolled and obsolete. Refer only to electronic document for the latest information.

