



## AE™ Specifications

The MIOX AE system is a simplified automatic unit configured for permanent installations requiring between 4 and 8 lbs/day (1.8 – 3.6 kg/day) of mixed oxidants measured as Free Available Chlorine (FAC). Available as a skid-mounted or stand-alone system, the AE is ideal for industrial applications and small rural and remote communities. The system activates based upon a level sensor measuring the volume of oxidant in a storage tank. After connection to water and a power source, the only routine operator service requirements are to load salt into the brine generator.

	AE-4	AE-6	AE-8
Rated FAC Capacity	4 lbs/day 1.8 kg/day	6 lbs/day 2.7 kg/day	8 lbs/day 3.6 kg/day
Salt Conversion (SCE)*	3.0 lb salt/lb FAC 3.0 kg salt/kg FAC	3.0 lb salt/lb FAC 3.0 kg salt/kg FAC	3.0 lb salt/lb FAC 3.0 kg salt/kg FAC
Energy Conversion (ECE)*	3.5 kW-hr/lb FAC 7.7 kW-hr/kg FAC	3.5 kW-hr/lb FAC 7.7 kW-hr/kg FAC	3.5 kW-hr/lb FAC 7.7 kW-hr/kg FAC
FAC Concentration*	3,800 mg/L (+/- 1,000)	4,200 mg/L (+/- 1,000)	5,000 mg/L (+/- 1,000)
Flow Rate^	6 gph 22.7 lph	9 gph 34 lph	9 gph 34 lph
Electrical Service Requirement (OSG Only)	110 or 220 VAC, 1 ph, 20A, 50/60 hertz	110 or 220 VAC, 1 ph, 20A, 50/60 hertz	220 VAC, 1 ph, 20A, 50/60 hertz
Nominal Energy to Unit	110 VAC: 12A, 1.3 KVA 220 VAC: 6A, 1.3 KVA	110 VAC: 15A, 1.7 KVA 220 VAC: 7.5A, 1.7 KVA	220 VAC: 9A, 2.0 KVA
Air Temp. Required	42° to 110° F 6° to 43° C		
Recommended Feed Water Temperature*	55° to 80° F 12° to 27° C		
Allowable Feed Water Temperature*	40° to 95° F 5° to 35° C		
Feed Water Pressure	25 to 75 psi 172 to 517 kPa		
Water Hardness	0 – 17 mg/L (1 grain/gallon)		
Maximum Silica Limit	20 mg/L		
Approximate Dimensions (WxDxH)	40 x 12.5 x 44.1 inches 101.6 x 31.75 x 112.01 cm		

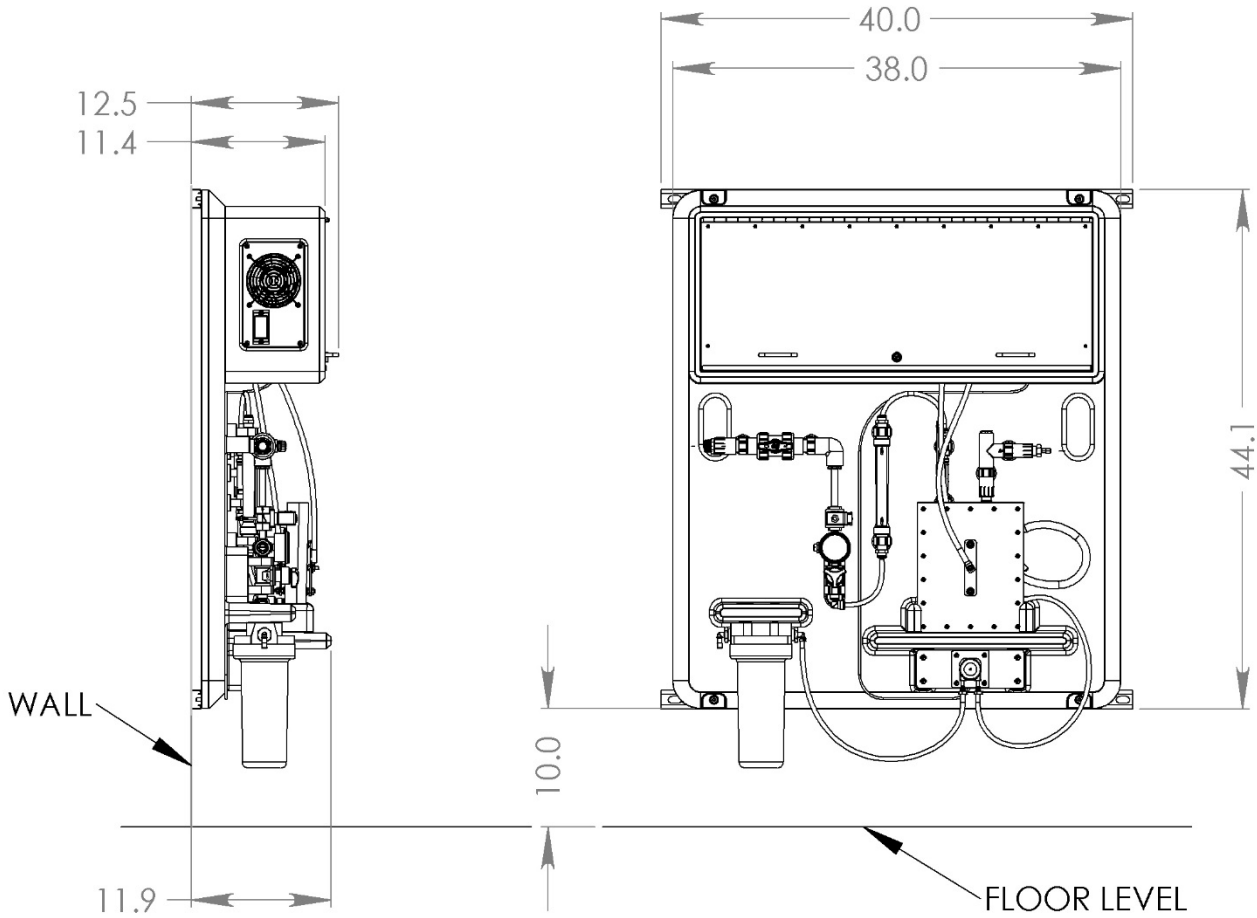
\*Performance may vary depending on salt quality, water quality, and water temperature.

^Feed water flow rate is subject to +/- 15% variation.

**Note: This electronic document is controlled. Once this document is printed it becomes uncontrolled and obsolete. Refer only to electronic document for the latest information.**



# AE Drawing



REFERENCE GENERAL ARRANGEMENT DRAWING 112-00021  
FOR INSTALLATION REQUIREMENTS

**Note: This electronic document is controlled. Once this document is printed it becomes uncontrolled and obsolete. Refer only to electronic document for the latest information.**

